



KIP 9000 Series

KIP



Faster, Sharper, Incredibly Powerful.

The KIP 9000 is meticulously engineered to set the new standard for high demand print production. Designed to deliver breakthrough quality and performance.

Faster

From the first print, the exceptional performance of the KIP 9000 represents a new category of wide format print production. It opens new business opportunities for high demand printing and imaging organizations by delivering cost-effective operation, great flexibility and an unmistakable edge over competitors.

Built to set a new benchmark in high production environments, the KIP 9000 produces 22 'D' size prints per minute – making it over 15% faster than any other system in its class.

Sharper

Based on proven high demand technology, the KIP 9000 delivers photo-like, 600 dpi image quality at maximum production speed. 600 dpi resolution provides breakthrough, high definition output onto a range of media choices for maximum versatility regardless of application.

Monochrome images are realistically rendered with accurate grayscale information and fine line capabilities to satisfy the most exacting quality standards. Color documents are easily scanned into digital files or high fidelity copies when the system is connected to any wide format inkjet printer.

Incredibly Powerful

KIP 9000 systems are engineered for production class operation and reliability. A unique, state-of-the-art print unit maintains system productivity while ensuring maximum uptime to make every minute count. Advanced self diagnostic systems eliminate potential print delays by providing designated operators with system status alerts via Email or text messaging if paper or toner replenishment is needed.

To boost production capacity, KIP 9000 systems are integrated with a range of online print stacking and folding devices and may be feature upgraded at any time as production needs increase.

Productivity:

- 22 'D' size prints per minute
- Ultra-fast file processing and conversion times
- Network and web-based printing software with integrated image viewing
- AutoCAD® and Microsoft® Certified application drivers

Quality:

- 600 x 600 dpi print, copy & scan resolution
- Advanced grayscale and fine line image enhancement
- Utilizes patented KIP High Definition Print Technology
- 24-bit scanners for monochrome and color

Versatility:

- Easy to understand touch screen user interface provides all system functions
- Compatible with all networks and design applications
- Modular design provides flexibility to tailor system capabilities to meet production requirements
- Expand system capabilities instantly with software key codes



7,900 SQUARE FEET PER HOUR. TOTAL CONTROL.

KIP High Definition Print Technology

KIP High Definition Print Technology (HDP) takes advantage of reduced dot sizes to produce the highest quality monochrome images. In addition, automated cleaning systems and extended maintenance intervals result in increased productivity.



KIP 9000 Printing Process: Four online media rolls, robust high speed cutting systems, patented HDP technology and a high demand oil-free fusing unit combine to deliver crisp fine line details, solid blacks and consistent grayscale areas.

KIP HDP Features:

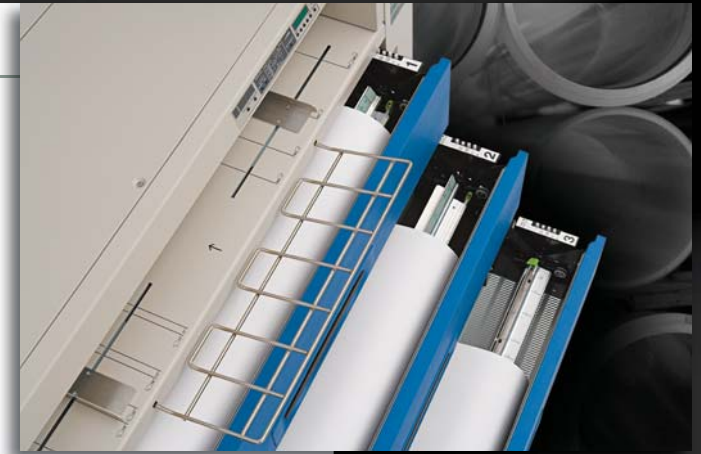
- High Definition Line Quality
- Distinctive Grayscales & Solid Areas
- 100% Toner Efficiency
- Expanded Duty Cycle

KIP 9000 Print Unit

Achieve a new level of precision print production based on High Definition Print Technology (HDP) found in the new KIP 9000. HDP is an innovative approach to wide format printing that has quite literally redefined the standard for production print quality.

A unique print head design featuring individual calibration of all LED pixels provides smooth and consistent fine lines, half tones and graphic image quality. An oil-free fusing process and 100% efficient KIP toner technology operate cleanly without carriers, developers or waste. In addition, its integrated four media roll capacity with high speed cutting systems ensure exceptionally accurate sheet sizes to give finished print sets a highly professional look.

The KIP 9000 print unit provides the ability to reproduce the full spectrum of technical, engineering and architectural documents with complete accuracy and confidence at a print speed of 47 feet per minute. Leverage the power of the KIP 9000 to meet the ever increasing demand for fast, high quality and cost effective wide format document reproduction.



KIP 9000 Printing

Key Features:

- 22 'D' size prints per minute
- Ultra-fast file processing and conversion times
- Network and web-based printing software with integrated image viewing
- AutoCAD[®] and Microsoft[®] Certified application drivers
- 600 x 600 dpi print resolution
- Advanced grayscale and fine line image enhancement
- Utilizes patented KIP High Definition Print Technology



Copying & Scanning

Key Features:

- Monochrome technical document system
- Full color graphics, photos and renderings
- Advanced optical systems deliver pixel-perfect images
- Create copy sets from unlimited number of originals
- Direct color copies to a wide range of inkjet printers
- Closed-loop color calibration system ensures copy accuracy
- Preset quality selections for line, line/photo, and photo original types

Monochrome Copying and Scanning

The KIP 9000 accurately reproduces technical documents at astonishing speed in true 600 dpi optical resolution. A range of flexible KIP scanners deliver maximum digital imaging quality and performance while reducing the total system footprint.

The system automatically senses the original

document width and dynamically adjusts exposure settings during the scanning process for maximum quality.

Documents containing lines, text, grayscales, renderings and aerial photographs are easily scanned into a variety of formats including single or multi-page PDF and DWF files. Once scanning is complete, the images are automatically delivered to the operator's choice of destination; network location, FTP site or personal/project inbox.



Color Copying and Scanning

Easy, color calibrated integration with inkjet printers provides modular and high performing copying solutions for the most discerning color copy centers. High speed, high resolution color imaging technology provides the capability to scan full color technical documents, maps, posters and photos into a variety of file formats for Email, archive and print purposes.

A full suite of production printing, copying and scanning applications expertly perform all color imaging applications. Create prints and copies in color to multiple inkjet printers, ensuring speed, flexibility and accurate production of color matched copies. Professional grade KIP software also delivers color management features and powerful image editing tools that perform difficult tasks easily and with consistent results from one job to the next.

The modular concept of KIP 9000 systems enables multiple configuration possibilities to suit any wide format document workflow environment.

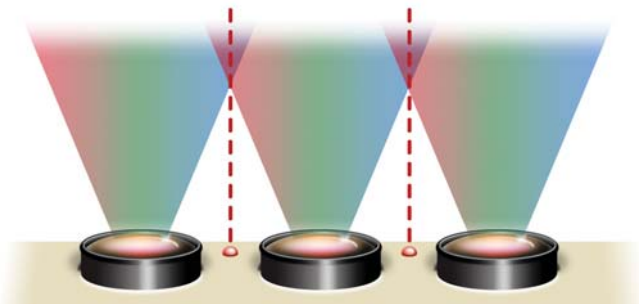
KIP 9200 MODULAR PRODUCTION SYSTEM

Production Imaging

The KIP 9200 system is a professional grade monochrome print and mono/color copy & scan solution that provides high demand users with the ultimate in imaging technology.

Key Features

- True 600 x 600 dpi optical resolution
- 24-Bit RGB True Color image capture
- Three independent imaging cameras
- KIP Real Time Thresholding technology
- Automatic image despeckling
- Monochrome image background removal
- Self-calibrating maintenance systems
- Advanced laser alignment camera system
- 24 Month optical system warranty



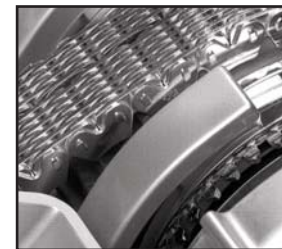
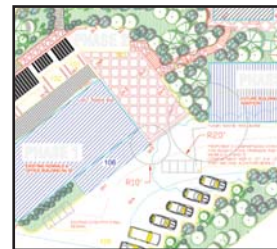
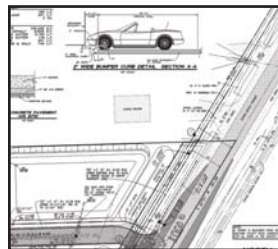
Three independent imaging cameras with an advanced laser alignment system and self-calibrating diagnostics provide an extraordinary level of quality.

Enhanced Monochrome Image Quality

The KIP 9200 system makes monochrome technical documents look better than ever. Exclusive KIP imaging technology creates crisp, black and white prints, copies and scans from all types of monochrome technical drawings, photographs, maps and graphic renderings. An advanced grayscale mode captures the full range of gray with no image drop-out or down sampling and is ideal for making accurate photo reproductions on inkjet printers.

World Class Color Quality

The KIP 9200 system features professional grade, 24-Bit color imaging to ensure the highest quality color photo and graphical reproductions. Create high resolution color copies on inkjet printers, or scan extremely detailed color originals into a variety of file formats appropriate for E-mail, archive and printing purposes.



The full spectrum of monochrome and color documents can be reproduced with the KIP 9200.



KIP Color Max Software

This powerful software package delivers advanced copying and scanning features and also includes the ability to RIP files to print. Users may print in monochrome or color to multiple printers, ensuring speed, flexibility and accurate production of high-quality color matched copies. KIP Color Max software provides advanced color management features and professional image editing tools that allow you perform difficult tasks easily and with consistent results from one job to the next.

Monochrome Imaging

- Monochrome scan speeds up to 9.6" per second!
- Stream-feed an unlimited number of originals when producing collated sets
- Create single or multi page digital files; including PDF and DWF
- Preset quality selections for line, grayscale and photo originals
- Advanced KIP imaging technologies deliver superior results

Color Imaging

- Color scan speeds up to 3.4" per second!
- High resolution, 24-bit color image quality
- Copy directly to inkjet printers or create color digital files
- Easy system calibration process ensures color copy and scan accuracy
- Increase system functionality with KIP Color Max software

KIP 9200 Mono Scan Speed

DPI	Monochrome Scan Speed	
600 x 600	3.2" / sec	16' / min
400 x 400	4.8" / sec	24' / min
300 x 300	6.4" / sec	32' / min
200 x 200	9.6" / sec	48' / min

System Configurations



KIP 9200



KIP 9200 Modular System with KIP Color Max

KIP 9200 Color Scan Speed

DPI	Color Scan Speed	
600 x 600	1.4" / sec	7' / min
400 x 400	2.0" / sec	10' / min
300 x 300	2.8" / sec	14' / min
200 x 200	3.4" / sec	17' / min

KIP Color MAX Imaging Features

- Custom Quality Filters
- Image Editor
- Image Deskew
- Image Despeckle
- Image Nesting
- Area Crop
- Wipeout / Mask
- Multiple Inkjets
- Color Management
- Print to Inkjet (RIP)
- Print Collated Color Sets
- Scan to E-mail
- Paneling
- Spectrophotometer Support



KIP Color Max provides advanced copying, scanning and printing of all monochrome and color documents.



KIP 9200 systems feature an exclusive 24 month optical system warranty.



KIP IPS SOFTWARE IS POWER AT YOUR FINGERTIPS!

KIP Image Processing Software Suite



The innovative technology found within KIP 9000 systems is simply and

easily controlled using the touch screen Image Processing System (IPS). The KIP IPS drives all aspects of the KIP 9000, enabling easy connectivity with IT infrastructures, multifunction capabilities and fast file processing speeds with no need for additional application servers. With this technology at your fingertips, all the demands of high production printing and imaging environments are readily met.

Fast and flexible, the KIP IPS software suite is widely regarded as the most open, integrated and powerful wide format system software available. KIP IPS software automatically discovers KIP systems available over the network for easy connectivity, system setup and configuration.

From web-based viewing and printing of documents in a wide range of formats, to PC job submission and application drivers, KIP IPS software streamlines production print work, saves time and increases productivity.

KIP PrintNET

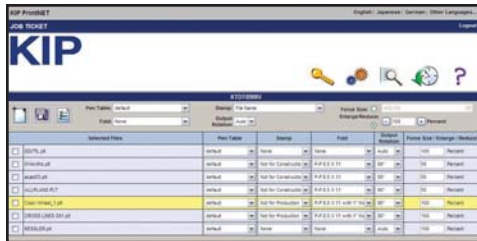


KIP PrintNET is a true web-based print utility that benefits users with versatile viewing,

printing, job queue management and system administration features without the need to install any software applications on network PCs. Users may select and send single or multiple files to KIP digital systems via a local network or the internet. In addition, KIP PrintNET generates customizable Email reports detailing all system usage on demand or at preset intervals. These reports contain data compatible with spreadsheet applications for easy customization and analysis.

KIP PrintNET Key Features

- The integrated PrintNET viewer displays accurate graphics, photos and fine lines
- Create print jobs from Windows, Apple, Novell and Unix/Linux based web browsers
- User name and password authentication system designed for maximum network security
- Apply printing preferences on a per-file basis or to a complete print job
- Accurate individual, departmental and project specific accounting information
- Operates in mixed environments of client PC operating systems



Use KIP PrintNET to print and manage all jobs via the internet.



View all files before printing with KIP PrintNET.

KIP Request



KIP Request network printing software is an easy-to-use application designed to provide network users with a fast and accurate means of producing high quality prints from all types of file formats. Every aspect of KIP Request is centered on efficient workflow, providing complete command of a host of powerful printing and print management tools. Users may preview print jobs, make image adjustments, set document folding parameters, enter accounting data, manage the print queue and send files to various KIP printers on the network via a single interface.

Microsoft Certified KIP Windows® Driver



The KIP Windows driver is WHQL certified for 64 and 32 Bit Windows Vista, XP and Server 2003, meaning the KIP Windows driver meets explicit standards of reliability and quality. The KIP Windows driver has been tested and proven to deliver a superior experience when running a PC with Microsoft Windows operating systems.

Autodesk®



KIP AutoCAD driver enables printing directly from AutoCAD applications. To assist in making printing decisions, two-way printer status allows users to view media information and system status. The KIP AutoCAD driver is compatible with AutoCAD software versions 2000 and up.



The KIP 9000 is fully integrated with Autodesk Revit® software to help provide the highest levels of productivity and print quality to the complete cycle of design and construction documentation.

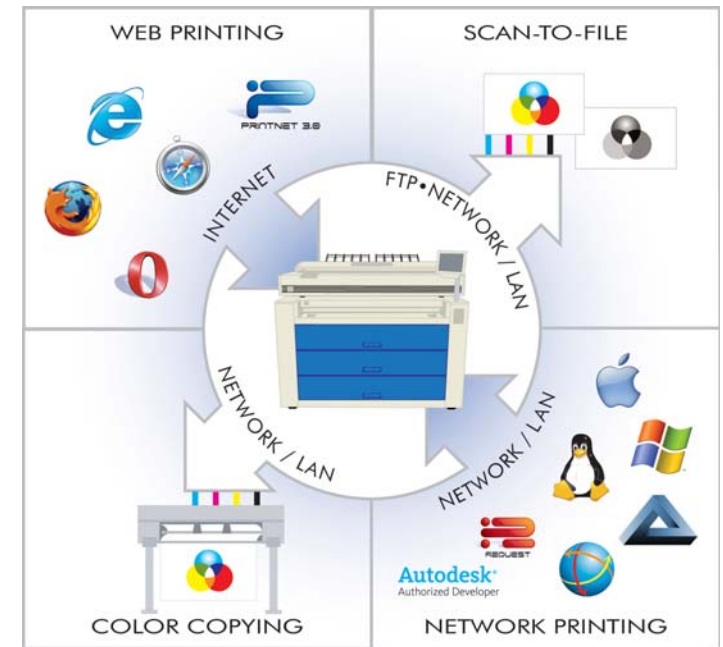


The DWF® file format from Autodesk may be quickly printed on the KIP 9000. DWF files can include drawing scale, views, multiple pages and hyperlinks, yet are as small as 1/20th the size of files generated from other design applications.

Integrated Workflow Solutions



KIP has developed vendor associations in the wide format printing industry with innovative, forward thinking providers of software solutions. Optimized to support the KIP 9000, these integrated workflow solutions cover all areas of wide format document production and workflow management.



KIP IPS software and integrated workflow solutions help optimize the management of digital and hard-copy information. As document management grows more complex, powerful workflow solutions help businesses work better, faster and more efficiently.



KIP 9000 SERIES SYSTEM OPERATIONS

KIP 9000 IPS

The KIP Image Processing System is a combination of processing power and flexible software applications designed for maximum productivity and ease-of-use. Applications are available on PC workstations, over the internet and at the KIP 9000 touch screen operator panel, providing a uniform user interface across the entire KIP digital product range. All applications have been designed to provide exceptional versatility, fast file processing and efficient use of network resources to maintain high productivity.

Automated Metering System

All KIP print, copy, and scan applications are designed to record and account for the use of all system functions. Customizable reports detailing total system usage are delivered via Email on demand or at designated intervals.

Easy Administration

Operators and administrators benefit from an array of sophisticated, easy-to-use queue management and accounting tools designed to meet today's most challenging network security demands.

Information Center

The KIP 9000 is configured to display contact information specific to the KIP authorized service provider. This feature is designed to assist operators when requesting consumables, service calls and system upgrades.

System Guides

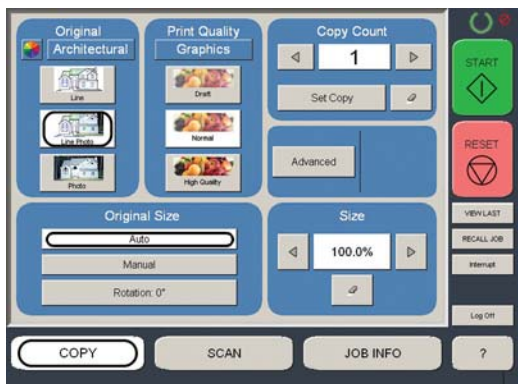
The operator panel displays illustrated guides to explain all major system applications. In addition, step-by-step media and toner replacement procedures are automatically displayed when necessary to provide users with system instructions.

System Upgrades

Each configuration may be easily field upgraded to provide new system features at any time.

Upgrades Include:

- Mono Copy & Scan
- Color Copy & Scan
- PDF Printing
- Folding
- KIP Color MAX



KIP 9000 Series touch screen interface



Instant keycode upgrades



Easy to understand illustrated operator guides

KIP 9000 Folding & Finishing Options

Through seamless integration with the KIP IPS, the KIP 9000 features a range of finishing solutions to enable true, end-to-end productivity. Because every production area is unique, a modular architecture enables scalability and system upgrades as they are needed. From intelligent print stackers to advanced online folding systems, finishing solutions for the KIP 9000 can be easily tailored to suit current production requirements while maintaining the flexibility to change with market demands.

KIPFold 9000

The KIPFold 9000 communicates with KIP 9000 system software applications and drivers to provide easy workflow integration. The KIPFold 9000 provides the flexibility to fold copies and prints into all architectural, engineering and metric standard packet sizes.

KIP 1200

The KIP 1200 stacker employs a driven roller system for accurate collection of up to 1000 prints of any size. 2-way printer communication maximizes system uptime.

KIPFold 9000 Packet Standards

- Architectural Print Sizes: 12" x 18", 18" x 24", 24" x 36", 36" x 48", 30" x 42"
- Engineering Print Sizes: 11" x 17", 17" x 22", 22" x 34", 34" x 44"
- Metric Print Sizes: A3 - A0
- Folded Packet Sizes: 8.5" x 11", 9" x 12" or 210 mm x 297 mm
- Margin: 0" - 2", 0 - 50 mm user selectable
- Packet Orientation: Portrait or Landscape (Arch., Eng.) Portrait (Metric)



KIPFold 9000



*KIP 1200 Stacker
Stacks 1000
A-E size prints*



KIP 9000 Series System Configurations

KIP 9000 PRINT SYSTEM

	Standard	Upgrade
Mono Printing	•	
Mono Copy & Scan		•
PDF Printing		•
Folding		•

KIP 9000 PRINT, COPY & SCAN SYSTEM

	Standard	Upgrade
Mono Printing	•	
Mono Copy & Scan	•	
Color Copy & Scan		•
PDF Printing		•
Folding		•



KIP 9000 Systems

KIP 9200 MONOCHROME PRINT, COPY & SCAN SYSTEM

	Standard	Upgrade
Mono Printing	•	
Mono Copy & Scan	•	
Color Copy & Scan		•
PDF Printing		•
Folding		•
KIP Color MAX		•

KIP 9200 MONO/COLOR PRINT, COPY & SCAN SYSTEM

	Standard	Upgrade
Mono Printing	•	
Mono Copy & Scan	•	
Color Copy & Scan	•	
PDF Printing		•
Folding		•
KIP Color MAX		•



KIP 9200 Systems



360 Bonnie Lane
 Elk Grove Village, IL 60007
www.fdccorp.com • sales@fdccorp.com

KIP

KIP is a registered trademark of KIP America. All other product names mentioned herein are trademarks of their respective companies. All product features and specifications are subject to change without notice. Complete product specifications are available upon request.